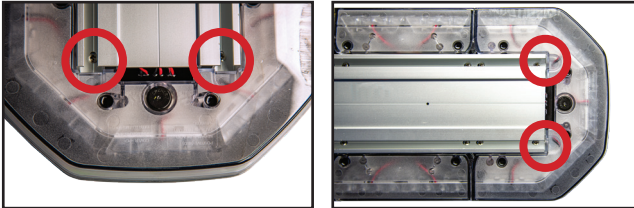


# Installation Instructions

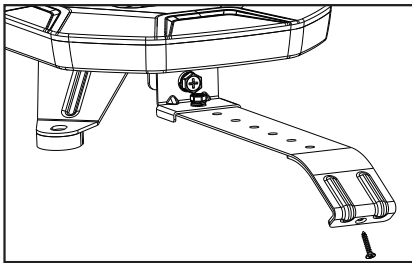
## 8893048 and 8893148 48 Inch LED Lightbar with Wireless Controller

### Mounting Instructions

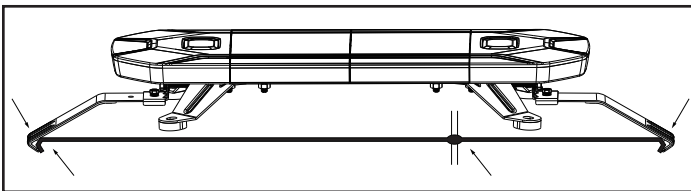
**1.** Track bolts insert from extrusion end pockets. Attach mounting brackets to track bolts. Leave loose for roof positioning. Adhere foam pads to bottom sides of mounting bracket feet.



**2.** Attach the strap hook to the mounting bracket.

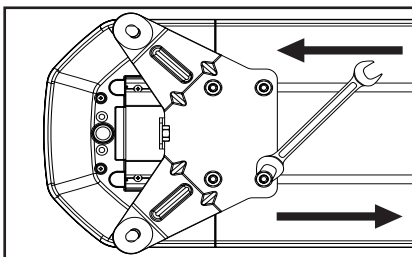


**3.** Position the lightbar on the vehicle roof.

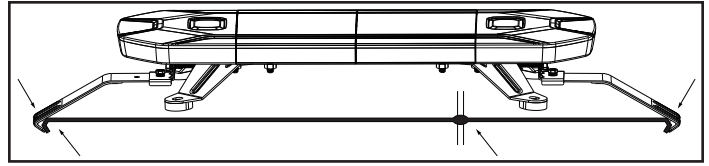


**4.** Adjust the distance of the two strap hooks by moving the brackets so that the strap hook's fits around the vehicle gutters/sills.

**5.** Tighten the four nuts on each side of the mounting feet.



**6.** Place the strap hooks around the gutters and tighten the screws so that the lightbar is securely fastened.



#### For Wireless Remote Use:

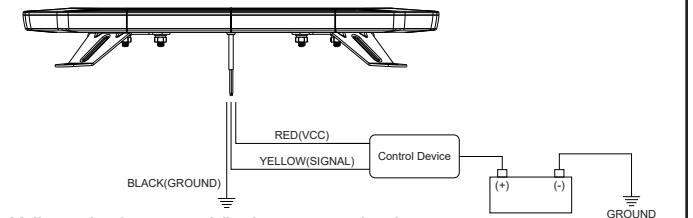
Route cable to 10A ignition switched source. Red to positive. If using a chassis ground, make sure to have a clean bare metal surface. Take care not to chafe wire, avoid all sharp edges, and avoid placing wire near any and all moving objects. Secure cable along the way with cable ties.

*\*The yellow wire is not used at this time.\**

Working voltage: 10-30VDC

Working temperature: -40F to 158F

#### For Hardwired Control

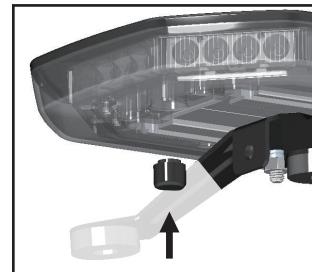


Yellow wire for manual flash pattern selection  
(For hardwiring to an optional wired controller)

#### Ventilation

If moisture enters the interior, there are ventilation holes on the underside. Remove the caps from the ventilation holes and allow the moisture to dry out. Then reassemble the caps.

*\*It is not recommended to use compressed air\**



#### Warranty

Buyers Products Co. warrants all truck/trailer hardware manufactured or distributed by it, to be free from defects in material and workmanship for a period of one year from date of shipment. Parts must be properly installed and used under normal conditions. Any product which has been altered, including modification, misuse, accident or lack of maintenance will not be considered under warranty. Normal wear is excluded. The sole responsibility of Buyers Products Co. under this warranty is limited to repairing or replacing any part or parts which are returned, prepaid, and are found to be defective by Buyers Products Co. Authorization from Buyers Products Co. must be obtained before returning any part. No charges for transportation or labor performed on Buyers' products will be allowed under this warranty.

# Installation Instructions

## 8893048 and 8893148 48 Inch LED Lightbar with Wireless Controller

### Remote Instructions

#### Battery is Included Inside the Remote

Remove back cover and plug battery into remote  
 Fully charge battery before first use (approx. 2 hrs)

Charging Specs: 5VDC 500mA

#### 1. Total of 13 flash patterns.

#### Flash Patterns for Amber (8893048)

	#	Pattern	FPM
SAE	1	Single Flash By Day	125
SAE	2	Single Flash By Night	125
	3	Double Flash	125
	4	Triple Flash - Alternating Front and Back / All	22
	5	Triple Flash - Alternating Middle / Two Ends / All	22
	6	All (Single Flash) / All (Quadruple Flash)	53
	7	Single Flash: Alternating Left and Right Half	130
	8	Tracking Flash: Alternating In and Out	75
	9	Tracking Flash	150
	10	Cruise	-
	11	Center Arrow	75
	12	Left Arrow	37.5
	13	Right Arrow	37.5

#### Flash Patterns for Amber / Clear (8893148)

	#	Pattern	FPM
SAE	1	Single Flash By Day	125
SAE	2	Single Flash By Night	125
	3	Single Flash - Alternating Left and Right Half	125
	4	Double Flash - Alternating Flash - Alternating Left and Right Half	125
	5	Slow Double Flash and Quick Single Flash Alternating	83
	6	Diagonal Half Double Flash	125
	7	Quadrupole Rotation Full Flash	149
	8	Tracking Flash: Alternating In and Out	75
	9	Tracking Flash	150
	10	Cruise	-
	11	Center Arrow	75
	12	Left Arrow	37.5
	13	Right Arrow	37.5

#### 2. Remote button arrangement and function:



**NOTE:** Allow a 1 second delay when pressing buttons to change the flash patterns.

"ON/OFF" is the main key to activate the remote's controlling function to the lightbar.

"NEXT" is the key to switch the next flashing pattern from the 1st one to the next one

"BACK" is the key to switch the previous flashing pattern

"BY DAY" is the hot-key for single flash SAE Class 1;

"BY NIGHT" is the hot-key for single flash SAE Class 1.

"CRUISE" is for Cruise flash pattern (steady burn)

"LEFT ARROW" is for Left Arrow traffic advisor pattern

"CENTER ARROW" is for Center Arrow traffic advisor pattern

"RIGHT ARROW" is for Right Arrow traffic advisor pattern

\*Left Alley/Take Down/Right Alley are not functional on the remote\*

#### Battery status display:

It will show the battery status when the remote is working.



#### Remote and Lightbar's controlling status:

The 13 flashing patterns are programmed in both the lightbar and remote. The flashing modes display on the remote screen.

To reset and sync remote controller with the lightbar, press "By Day" button.

# Installation Instructions

To pair a replacement controller (3046140), follow instructions below.

## Remote Controller Recoding and Pairing

Please use the link below to download the software for remote recoding.

<http://bit.ly/ta91remotesoftware>

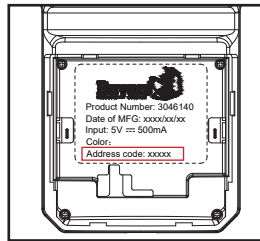
**1. To recode the remote to the LIGHTBAR, please follow the steps below:**

LIGHTBAR is set with a unique address code in the main control board. This is the same as the one coded in the remote. This address code will be laser marked on the top of the lightbar, below the Buyers logo as well as on the back side of the wireless remote.

Please refer to the picture 1 and 2:



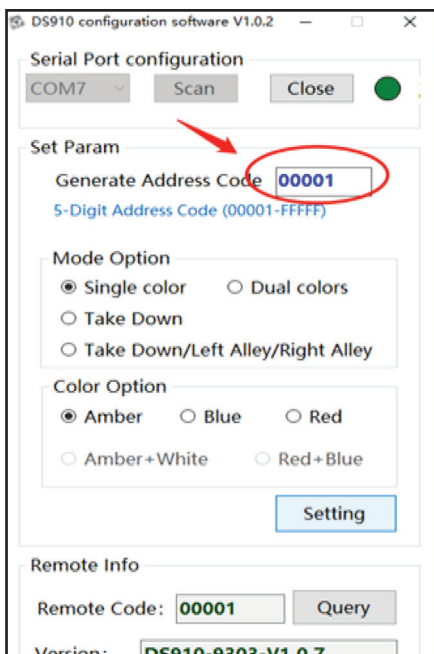
Picture 1



Picture 2

LIGHTBAR is set with a unique address code when it is manufactured. The remote's address code can be burned by the end user. However, the same address code marked on the lightbar must be burned in the remote. (Picture 3)

The address code can be programmed from 00001~FFFFF.



Picture 3

**2. For the all amber version or the amber/clear version, the address code can be burned as per steps below:**

**Operate the software from step 1 to 6.**

*Please refer to picture 4:*

Install the driver software on the computer. Connect the USB cable to the remote and computer for burning and it will show the serial port information; choose the port.

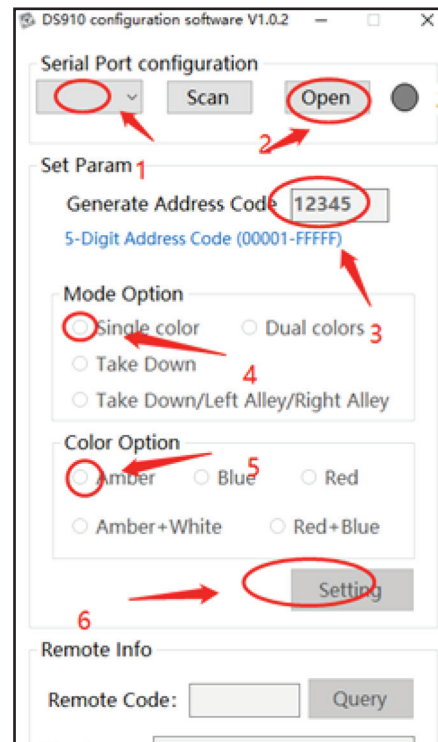
Click "OPEN" and the software will be standby for burning.

Set Param: Set one address code from 00001~FFFFF, which must be the same as the one marked on the lightbar, so that the remote can control the lightbar accordingly.

MODE Option: Choose the lightbar color version. If it is single color, then choose "Single color". If it is dual color, then choose "Dual color".

Color Option: To choose the color of the lightbar, ie. Amber or Amber/Clear.

Click "Setting" and the Remote Info shows the successful burning information.



Picture 4